

POARTA ACCES AUTO SI POARTA PIETONALA

Scara 1:20

450

GA1

GA2

110

GA3

200

25

5

80

5

15

55

25

5

180

SECTIUNE A-A / FUNDATIE F1

Scara 1:20

S1

50

50

50

50

100

100

50

50

100

100

SECTIUNE B-B / FUNDATIE F4

Scara 1:20

S2

S3

35

110

35

50

50

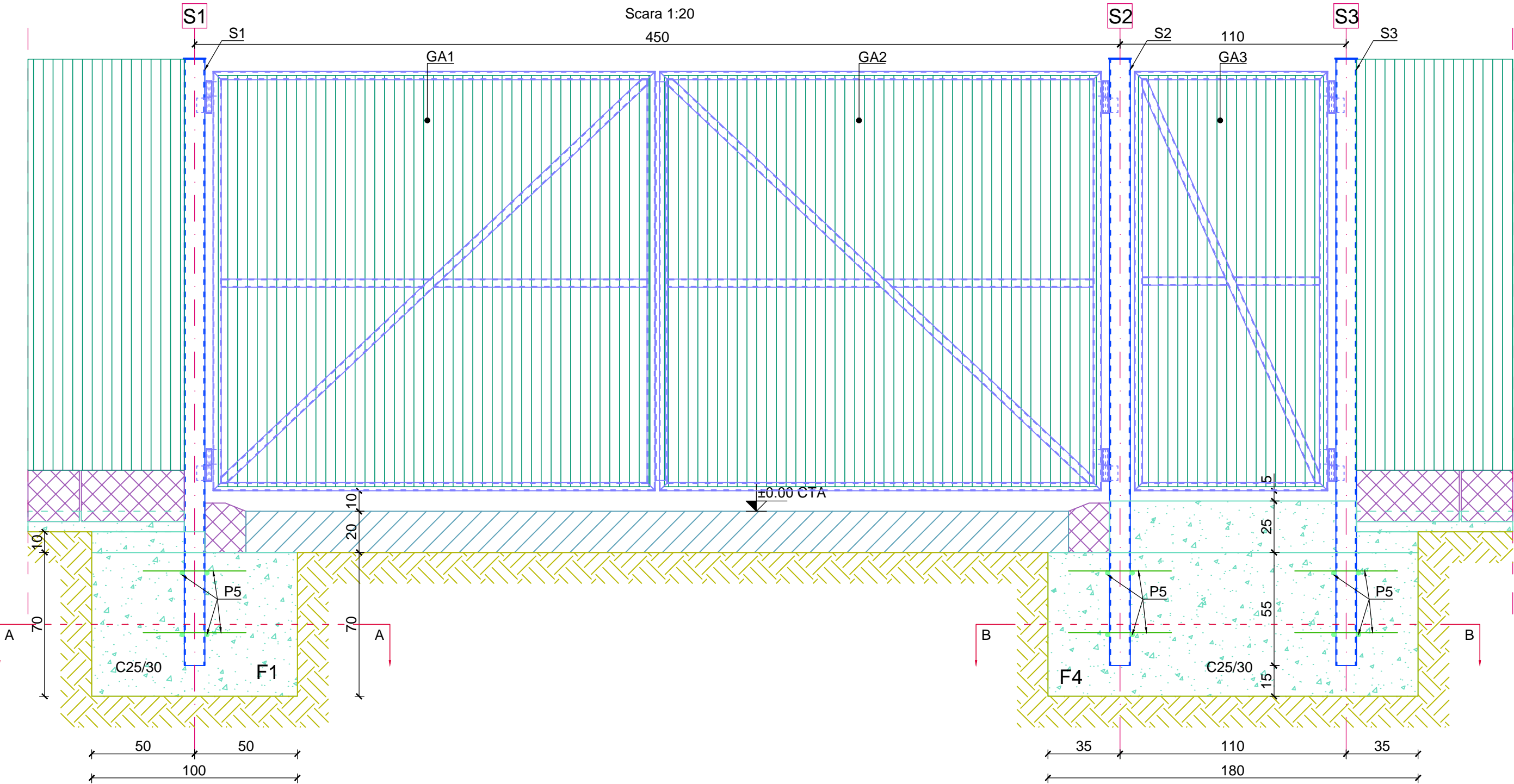
100

50

50

180

180



MATERIALE :



- BETON ARMAT - C25/30 - XC4+XF1; CI 0.20; CEM II A-S 32.5 N sau R; S3;
- GRANULATIE AGREGATE - Dmax. 16mm
- BETON SIMPLU - C12/15 - X0; CI 1.0; CEM II A-S 32.5 N sau R; S1-S3; GRANULATIE AGREGATE - Dmax. 22mm
- ARMATURA : OB37; PC52 - SR 438-1:2012; STNB - SR 438-3:2012;
- CONFECTII METALICE: S 235 J2

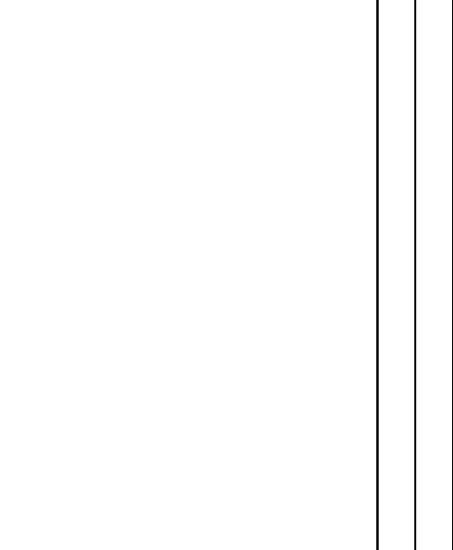
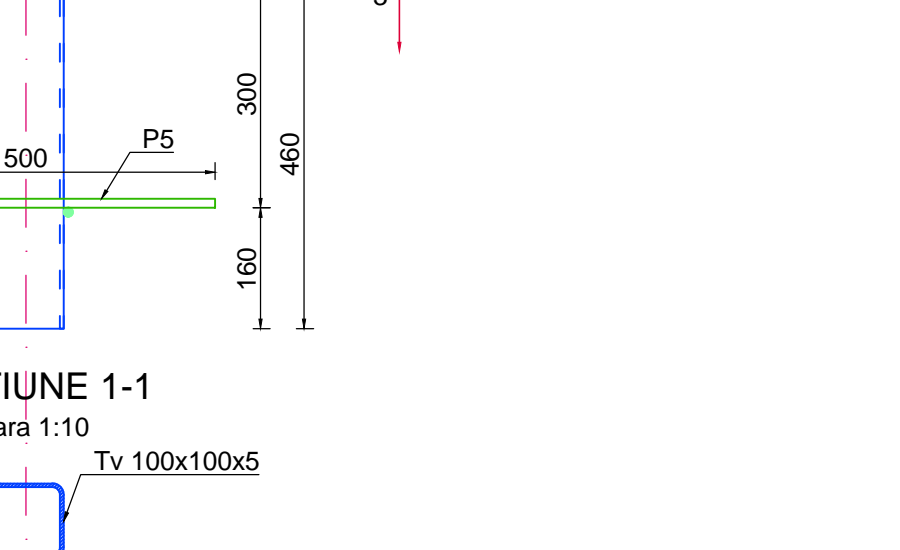
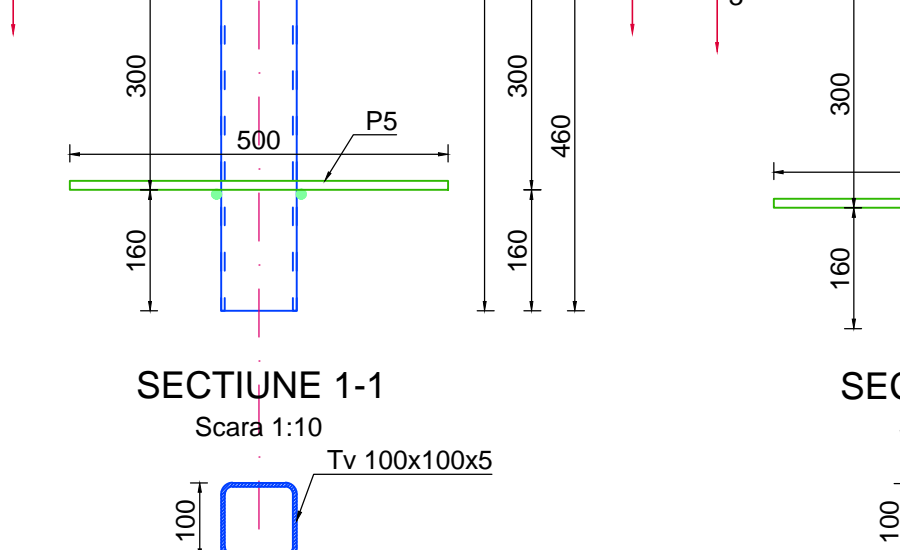
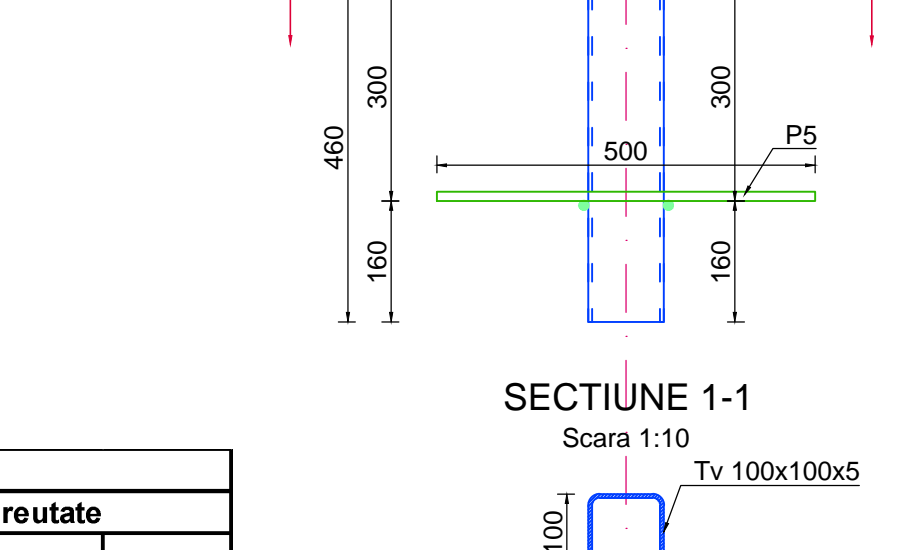
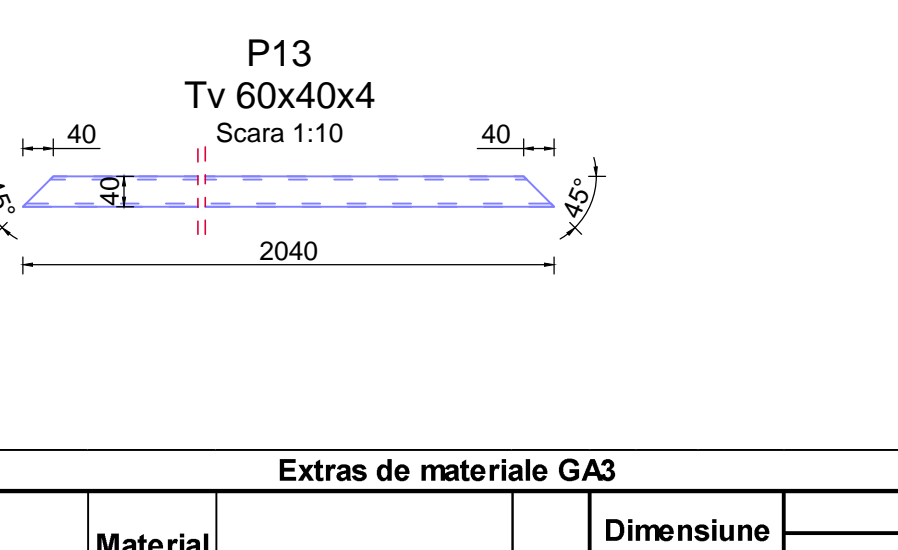
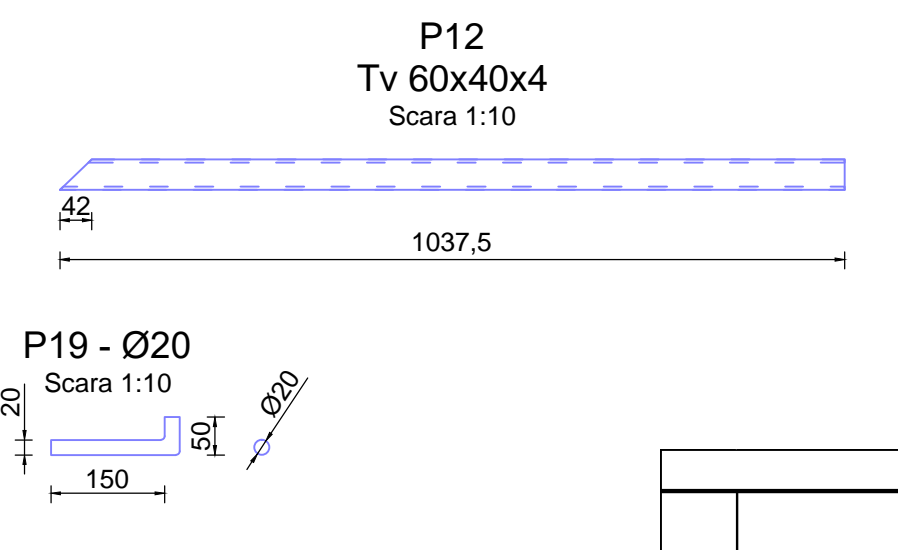
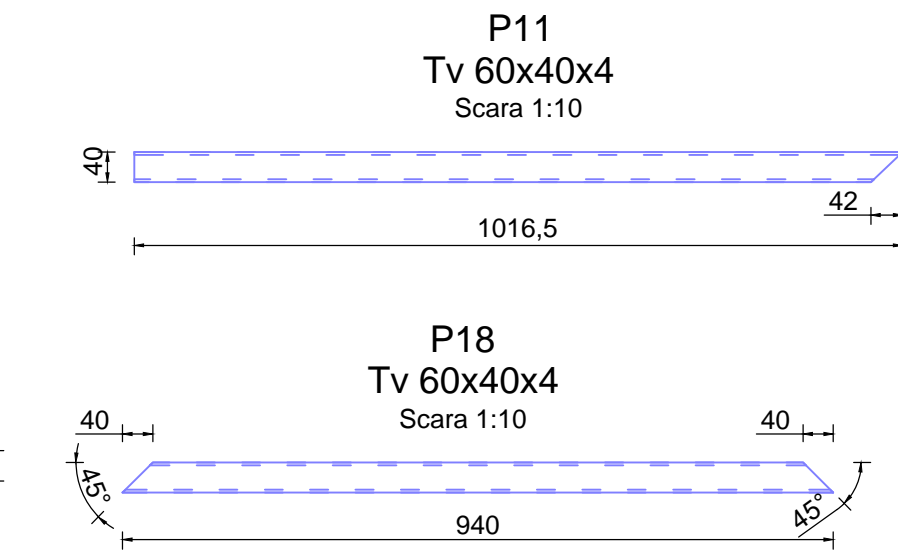
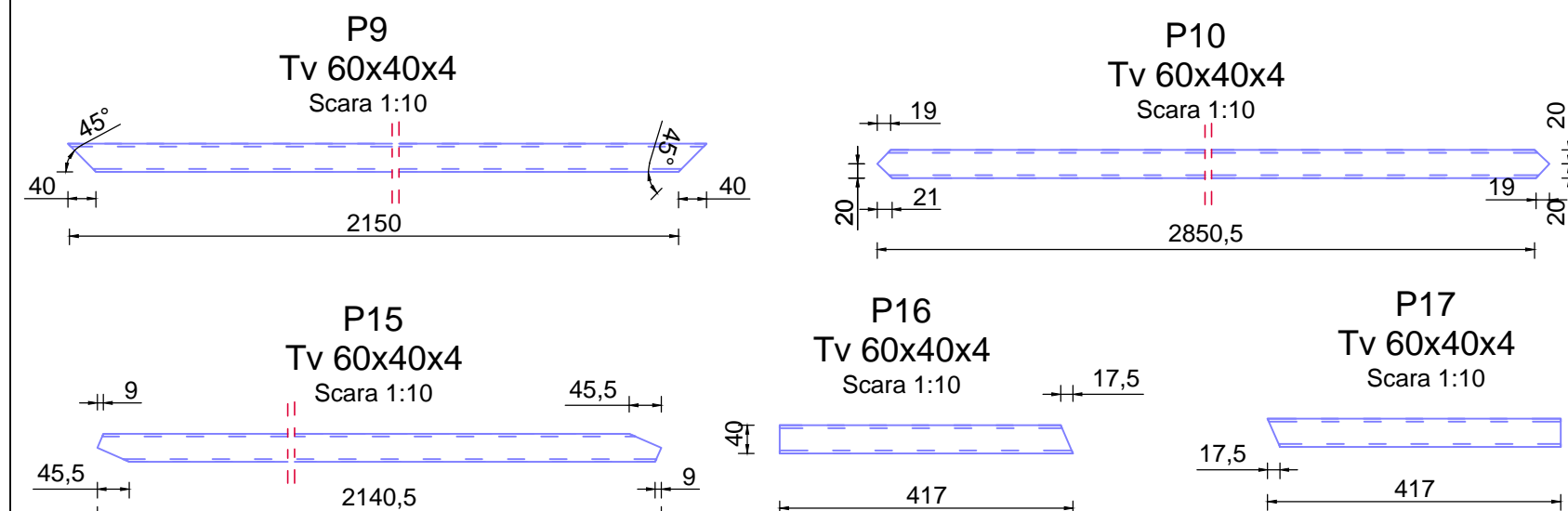
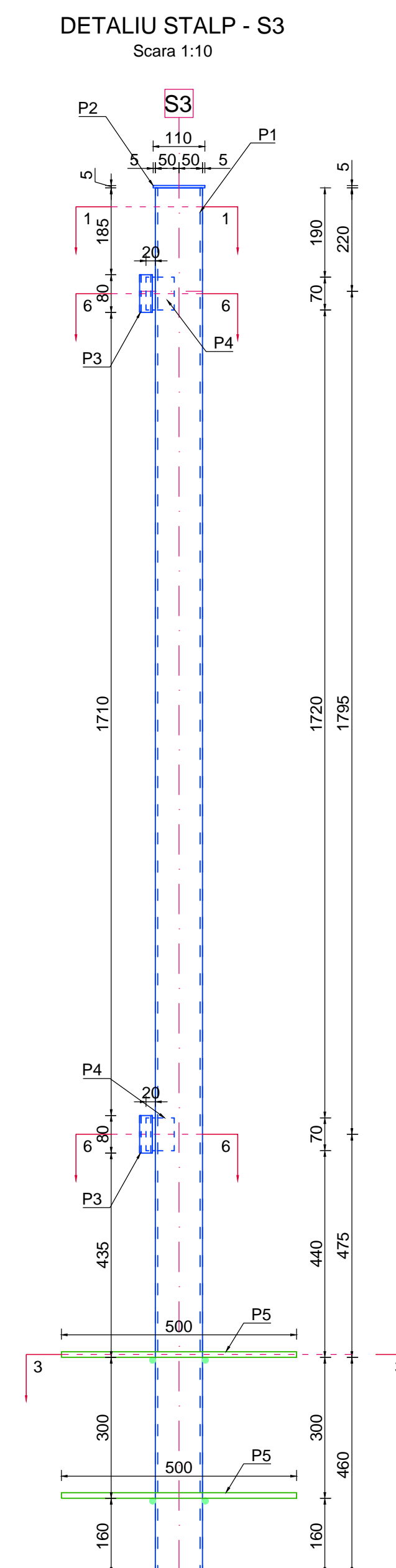
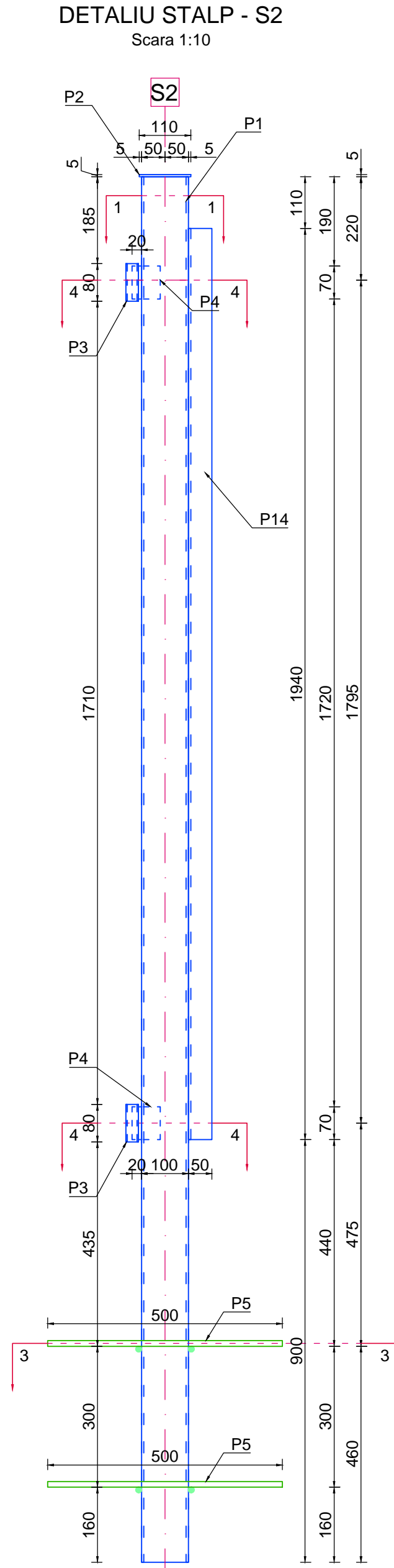
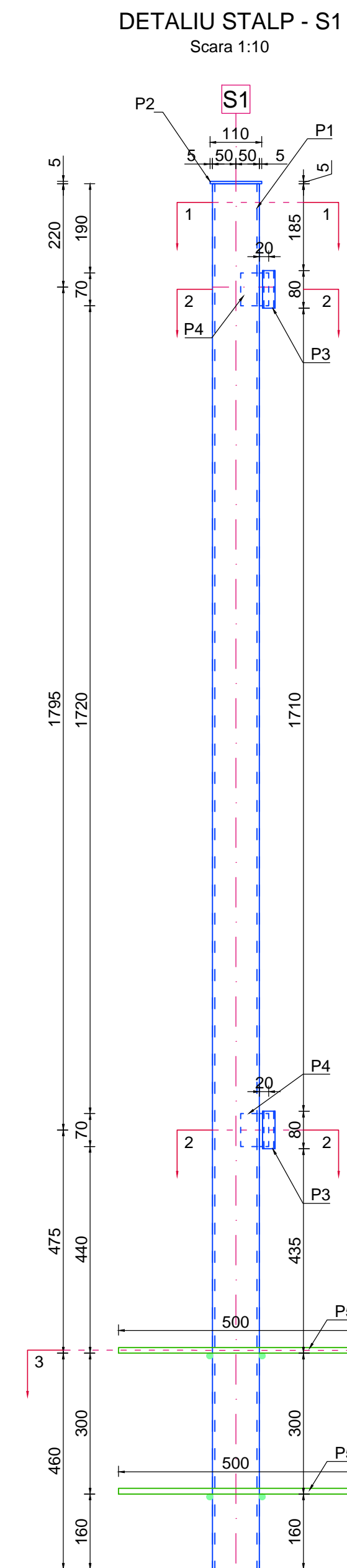
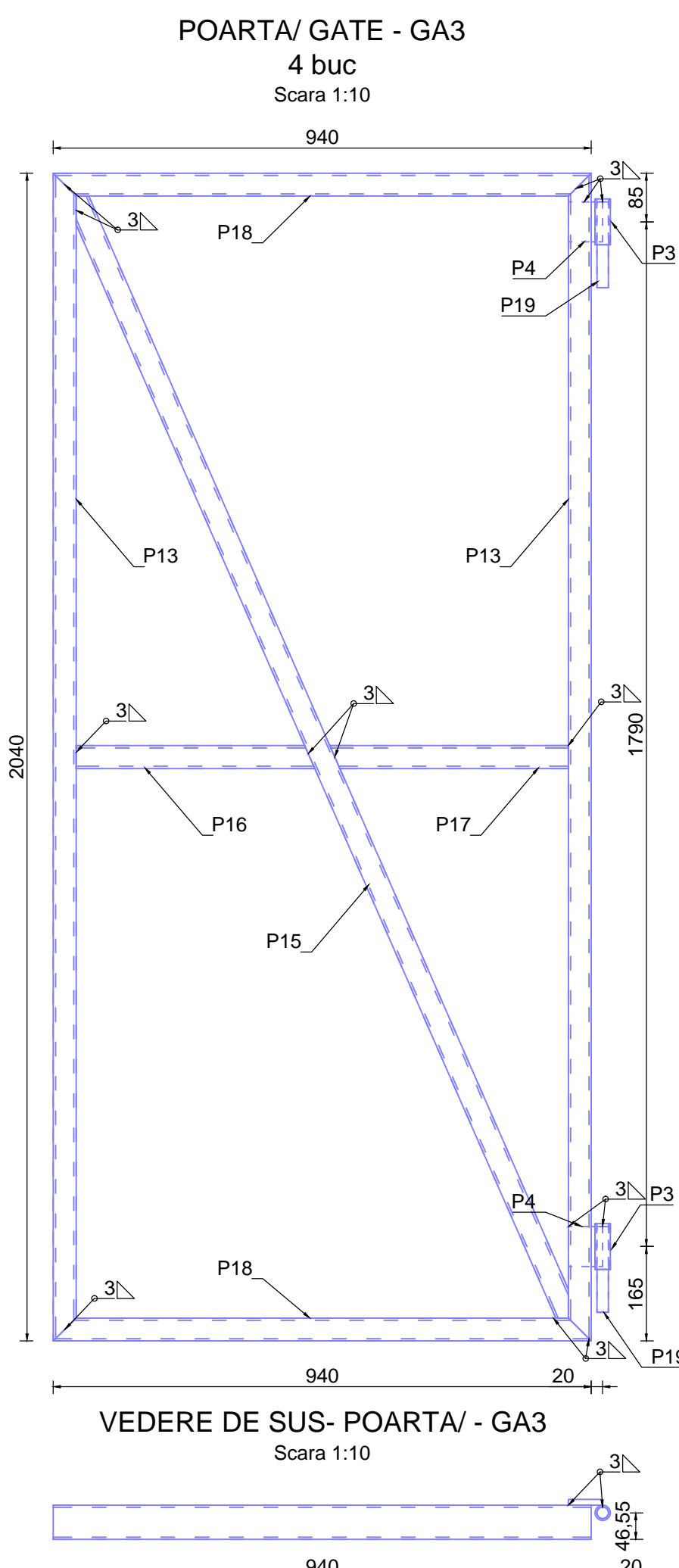
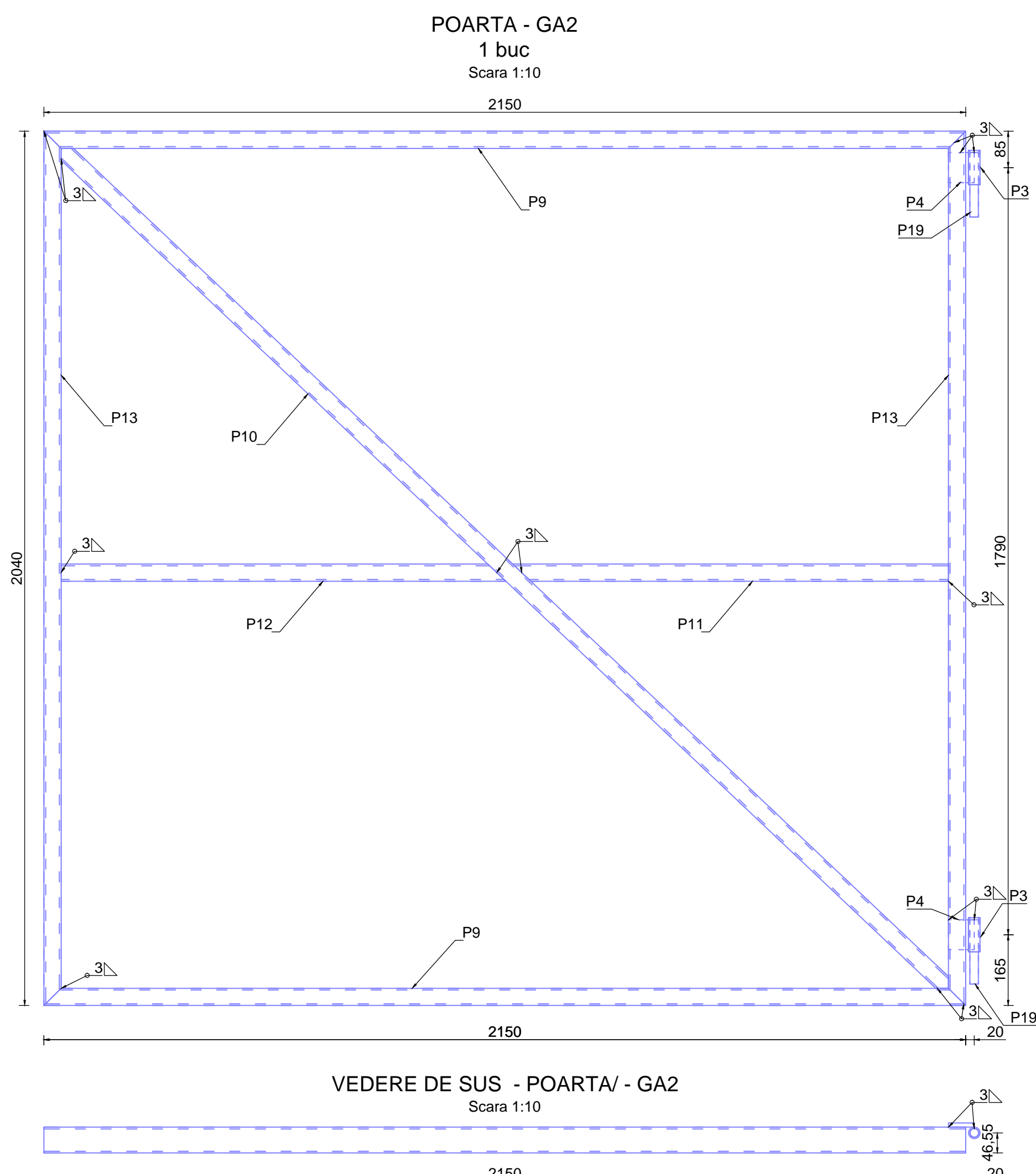
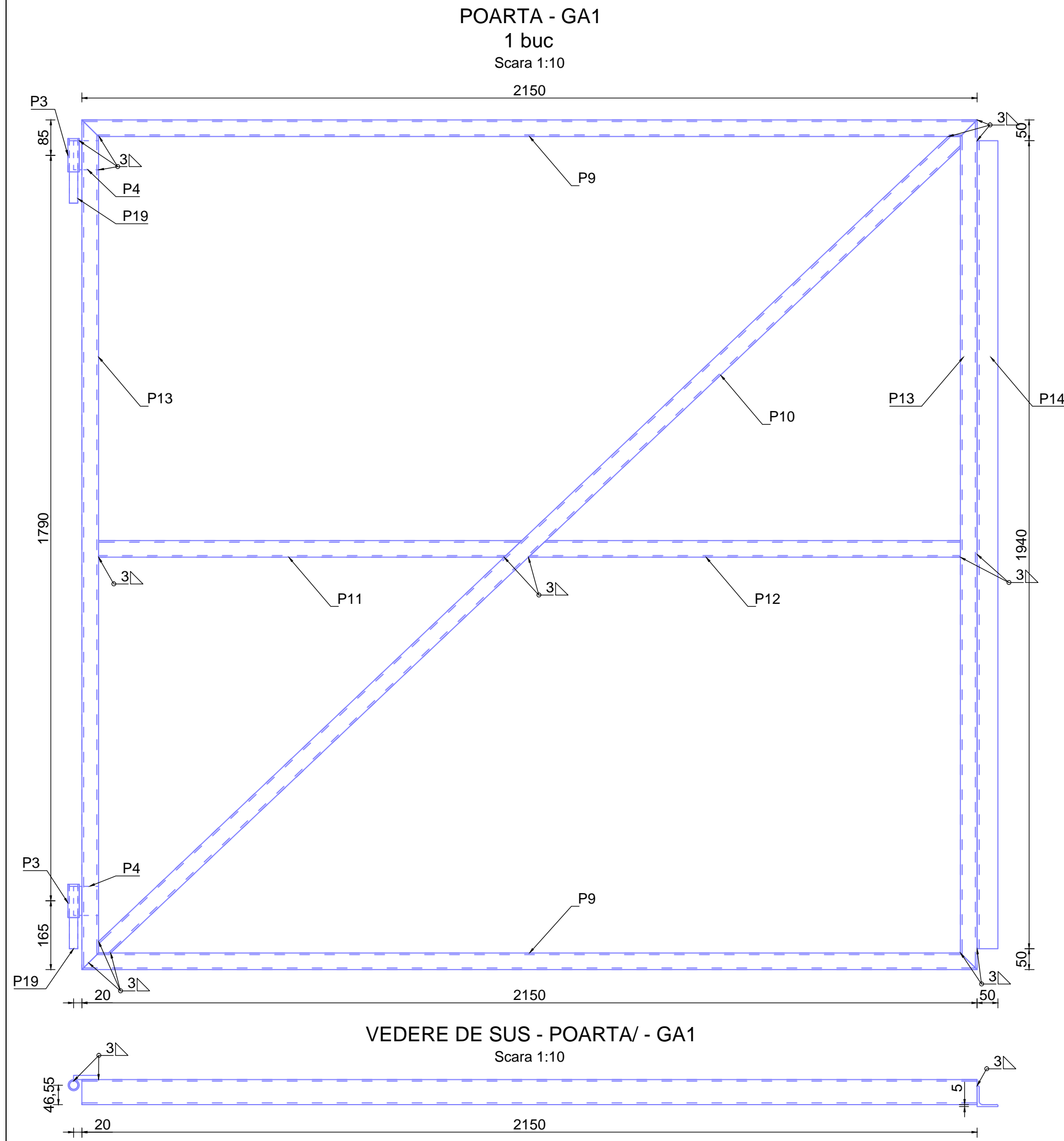
NOTA :

- CATEGORIA DE IMPORTANTA "C" CONF. HG 766/1997
- CLASA DE IMPORTANTA "III" CONF. P100-1/2013;
- CONSTRUCTIA ESTE AMPLASATA IN ZONA SEISMICA CU ACCELERATIA TERENULUI PENTRU PROIECTARE $a_g = 0.35$ g SI PERIOADA DE CONTROL(DE COLT) $T_c = 1.0$ s - conform P100 - 1/2013;
- DOMENIUL DE VERIFICARE A1;
- DIAMETRE ARMATURI : IN mm;
- COTE DESEN : IN cm;

NOTA:

- TOATE ELEMENTELE METALICE SE INCADREAZA IN CATEGORIA "B" DE EXECUTIE (CONF. STAS 767/0-88);
- CLASA DE ACCEPTABILITATE A SUDURILOR ESTE "C" (CONF. C150-99 TABEL 5);
- SUDURILE DE COLT NESPECIFICATE IN DESEN VOR AVEA GROSIMEA 0.7 DIN CEL MAI SUBTIRE ELEMENT IMBINAT IAR LUNGIMEA SUDURII VA FI PE TOATA SUPRAFATA DE CONTACT;
- PROTECTIA ANTICOROZIVA : GRUNDUITA (NUMARUL TOTAL DE STRATURI 2 , AVAND GROSIMEA TOTALA 80µm) SI VOPSITA (NUMARUL DE STRATURI 3-5, AVAND GROSIMEA TOTALA 200µm).
- CLASA DE COROZIVITATE : "C3" CONFORM CU GP 121/2013;
- GRADUL DE PREGATIRE A SUPRAFETELOR : "Sa2.5" , "PSa2,5" CONFORFM TABEL 4.2 DIN GP 121/2013.
- SISTEM DE ACOPERIRE CU DURABILITATE MARE (H) > 15 ANI CONFORM SR EN ISO 12944-1;

02	Emis pentru Construire	03.2020	Ing.R. Brutaru	Ing.M.Voicu		
01	Emis pentru Construire	03.2019	Ing.R. Brutaru	Ing.M.Scurtu		
00	Prima revizie	09.2018	Ing.R. Brutaru	Ing.M. Scurtu		
Rev.	Denumirea modificarii	Data	Intocmit	Verificat		
 RIA ENGINEERING & CONSULTING 107065 BERTEA, SAT BERTEA, 812 100015, PLOIESTI, IL CARAGIALE 49 TELEFON: +40 244 471 659 email: office@riaengineering.ro		 CONPET S.A. Str. Anul 1848, nr. 1-3, 100559, PLOIESTI,		Nr. proiect:	Desen - Nr.:	Rev.
				B.031.007	CS-PLN-114	02
Beneficiar:		CONPET S.A.		Specialitate Doc.:	Format	
Instalatie:		STATIE DE POMPA OCHIURI		CIVIL	1.25-A3	
Scara:		Denumire desen				Faza
1 : 20		Plan Imprejmuire si Porti Acces - Pag.1/4				PT+DE



MATERIALE :

- BETON ARMAT - C25/30 - XC4+XF1; CI 0.20; CEM II A-S 32.5 N sau R; S3; GRANULATIE AGREGATE - Dmax. 16mm
- BETON SIMPLU - C12/15 - X0; CI 1.0; CEM II A-S 32.5 N sau R; S1-S3; GRANULATIE AGREGATE - Dmax. 22mm
- ARMATURA - OB37; PC52 - SR 438-1:2012; STNB - SR 438-3:2012;
- CONFECTII METALICE: S 235 J2

NOTA :

- CATEGORIA DE IMPORTANTA "C" CONF. HG 766/1997
- CLASA DE IMPORTANTA "III" CONF. P100-1/2013.
- CONSTRUCTIA ESTE AMPLASATA IN ZONA SEISMICA CU ACCELERATIA TERENULUI PENTRU PROIECTARE $a_0 = 0.35$ g SI PERIOADA DE CONTROL (DE COLT) $T_c = 1.0$ s - conform P100 - 1/2013;
- DOMENIUL DE VERIFICARE A1;
- DIAMETRE ARMATURII : IN mm;
- COTE DESEN : IN cm;
- TOATE ELEMENTELE METALICE SE INCADREAZA IN CATEGORIA "B" DE EXECUTIE (CONF. STAS 767/0-88);
- CLASA DE ACCEPTABILITATE A SUDURILOR ESTE "C" (CONF. C150-99 TABEL 5);
- SUDURILE DE COLT NESPECIFICATE IN DESEN VOR AVEA GROSIMEA 0.7 DIN CEL MAI SUBTIRE ELEMENT IMBINAT IAR LUNGIMEA SUDURII VA FI PE TOATA SUPRAFATA DE CONTACT;
- PROTECTIA ANTICOROZIVA : GRUNDUITA (NUMARUL TOTAL DE STRATURI 2 , AVAND GROSIMEA TOTALA 80µm) SI VOPSITA (NUMARUL DE STRATURI 3-5, AVAND GROSIMEA TOTALA 200µm);
- CLASA DE COROZIVITATE : "C3" CONFORM CU GP 121/2013;
- GRADUL DE PREGATIRE A SUPRAFETELOR : "Sa2.5" , "PSa2.5" CONFORM FABEL 4.2 DIN GP 121/2013.
- SISTEM DE ACOPERIRE CU DURABILITATE MARE (H) > 15 ANI CONFORM SR EN ISO 12944-1;
- GROSIMEA MORTARULUI DE SUBTURNARE POATE VARIA DE LA 0-50 MM IN FUNCTIE DE GRADUL DE ORIZONTALITATE AL COTEI SUPERIOARE A BETONULUI.

ATENTIE !

- SE RECOMANDA CA EXCAVATIILE GROSIERE SA SE EXECUTE IN RITM ALERT, PE CAT POSIBIL INTR-O PERIOADA LIPSITA DE PRECIPITATII, IAR LUCRARILE SA FIE SUPRAVEGHEATE DE GEOTEHNICIAN;
- ULTIMUL STRAT DE PE FUNDUL SAPATURII (CIRCA 20 CM) VA FI INDEPARTAT INAINTE DE TURNAREA STRATULUI DE EGALIZARE DIN BETON SIMPLU.

LEGENDA/ LEGENDA:

DOCUMENTE REFERINTA:

- 1881-CP92-CS-DWG-001-02-R_Gen Civ Str;

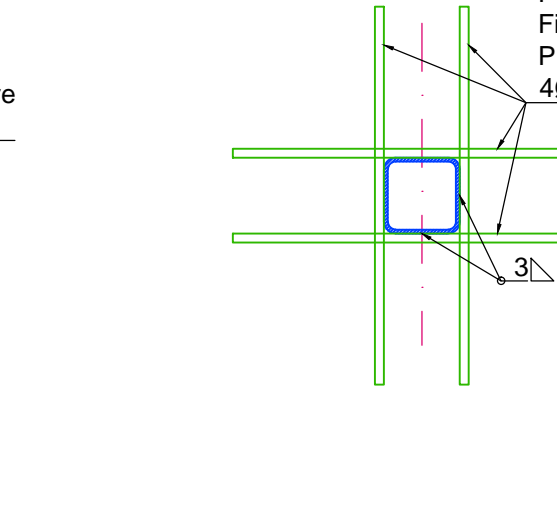
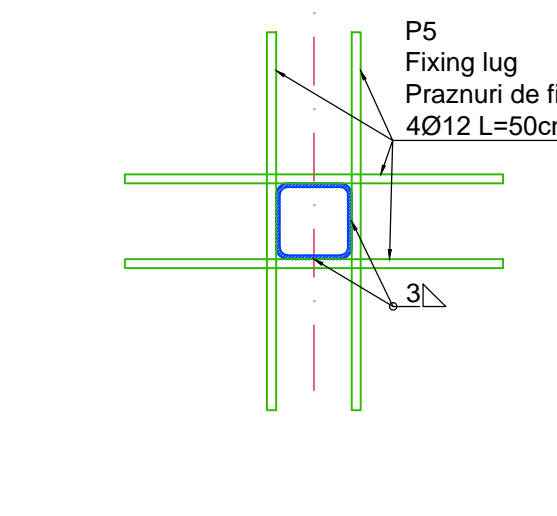
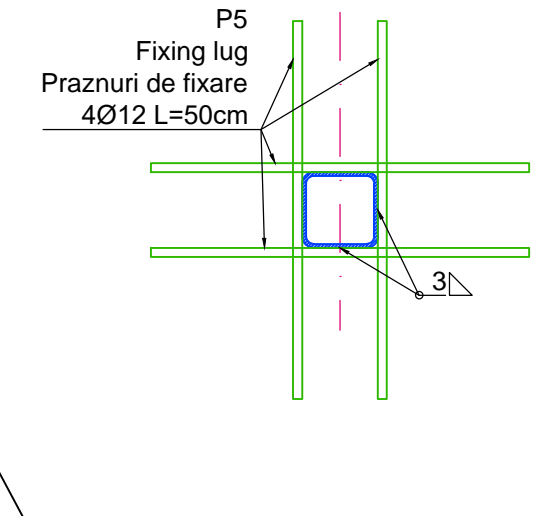
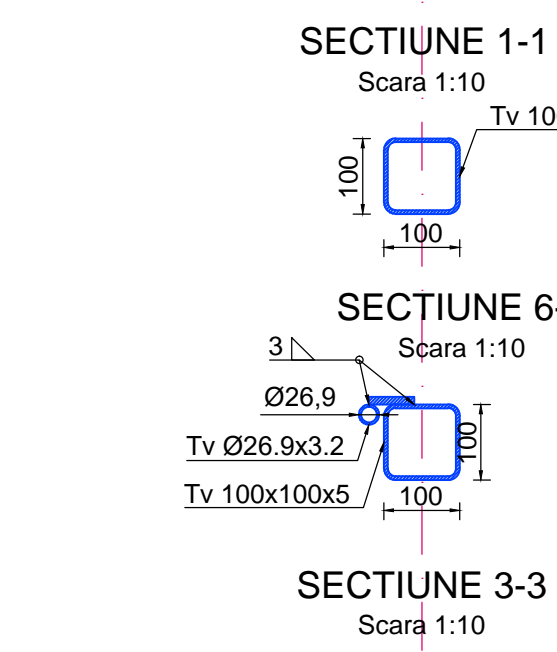
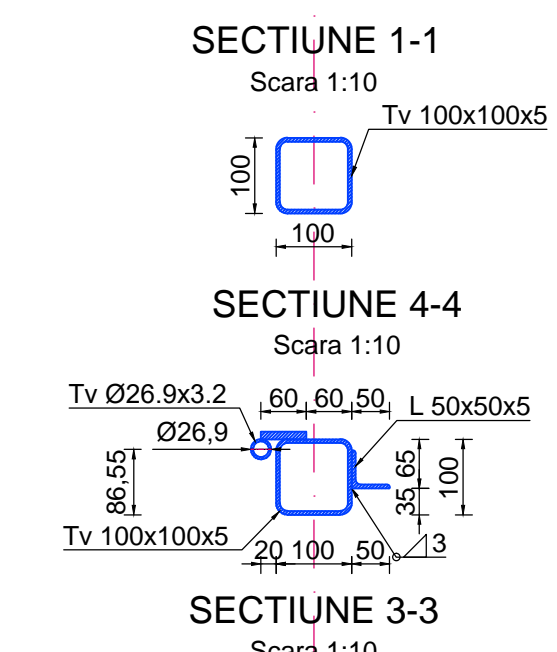
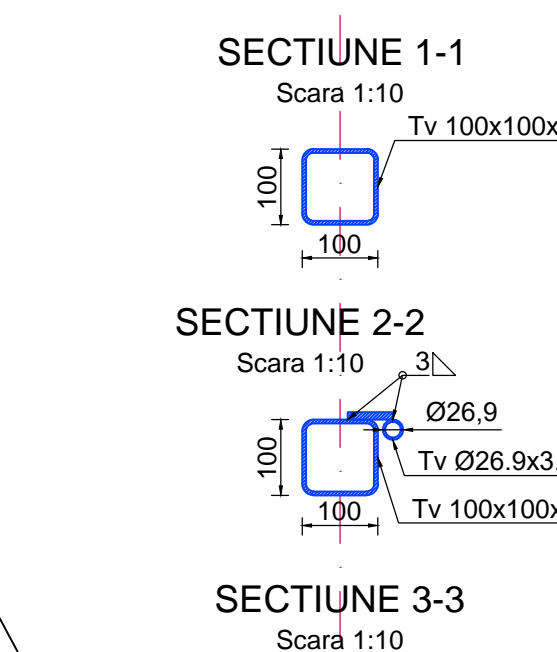
Extras de materiale GA1									
Poz.	Nume	Material	Norma Produs	Buc.	Dimensiune (mm)	Greutate			Total
						kg/buc.	kg/m		
P3	Tube $\Phi 26.9 \times 3.2$	S235 J2	SR EN 10060-2004	2	80	-	1.87	0.30	
P4	Plate	S235 J2	SR EN 10029-2011	2	10 60 70	0.33	-	0.66	
P9	Tube rec. 60x40*4	S235 J2	SR EN 10219-2-2006	2	2150	-	6.56	28.21	
P10	Tube rec. 60x40*4	S235 J2	SR EN 10219-2-2006	1	2850	-	6.56	18.70	
P11	Tube rec. 60x40*4	S235 J2	SR EN 10219-2-2006	1	1016	-	6.56	6.66	
P12	Tube rec. 60x40*4	S235 J2	SR EN 10219-2-2006	1	1037	-	6.56	6.80	
P13	Tube rec. 60x40*4	S235 J2	SR EN 10219-2-2006	2	2040	-	6.56	26.76	
P14	L 50x50x4	S235 J2	SR EN 10056-1:2000	1	1940	-	3.06	5.94	
P19	Round $\Phi 20$	S235 J2	SR EN 10060-2004	2	200	-	2.47	0.99	
Total (kg) - inclusiv 3% pentru un ansamblu									97
Total (kg) - pentru 1 ansamblu									97

Extras de materiale GA2									
Poz.	Nume	Material	Norma Produs	Buc.	Dimensiune (mm)	Greutate			Total
						kg/buc.	kg/m		
P3	Tube $\Phi 26.9 \times 3.2$	S235 J2	SR EN 10060-2004	2	80	-	1.87	0.30	
P4	Plate	S235 J2	SR EN 10029-2011	2	10 60 70	0.33	-	0.66	
P9	Tube rec. 60x40*4	S235 J2	SR EN 10219-2-2006	2	2150	-	6.56	28.21	
P10	Tube rec. 60x40*4	S235 J2	SR EN 10219-2-2006	1	2850	-	6.56	18.70	
P11	Tube rec. 60x40*4	S235 J2	SR EN 10219-2-2006	1	1016	-	6.56	6.66	
P12	Tube rec. 60x40*4	S235 J2	SR EN 10219-2-2006	1	1037	-	6.56	6.80	
P13	Tube rec. 60x40*4	S235 J2	SR EN 10219-2-2006	2	2040	-	6.56	26.76	
P19	Round $\Phi 20$	S235 J2	SR EN 10060-2004	2	200	-	2.47	0.99	
Total (kg) - inclusiv 3% pentru un ansamblu									92
Total (kg) - pentru 1 ans.									92

Extras de materiale GA3									
Poz.	Nume	Material	Norma Produs	Buc.	Dimensiune (mm)	Greutate			Total
						kg/buc.	kg/m		
P3	Tube $\Phi 26.9 \times 3.2$	S235 J2	SR EN 10060-2004	2	80	-	1.87	0.30	
P4	Plate	S235 J2	SR EN 10029-2011	2	10 60 70	0.33	-	0.66	
P13	Tube rec. 60x40*4	S235 J2	SR EN 10219-2-2006	2	2040	-	6.56	26.76	
P15	Tube rec. 60x40*4	S235 J2	SR EN 10219-2-2006	1	2140	-	6.56	14.04	
P16	Tube rec. 60x40*4	S235 J2	SR EN 10219-2-2006	1	417	-	6.56	2.74	
P17	Tube rec. 60x40*4	S235 J2	SR EN 10219-2-2006	1	417	-	6.56	2.74	
P18	Tube rec. 60x40*4	S235 J2	SR EN 10219-2-2006	2	940	-	6.56	12.33	
P19	Round $\Phi 20$	S235 J2	SR EN 10060-2004	2	200	-	2.47	0.99	
Total (kg) - inclusiv 3% pentru un ansamblu									62
Total (kg) - pentru 1 ansamb.									62

Extras de materiale S1									
Poz.	Nume	Material	Norma Produs	Buc.	Dimensiune (mm)	Greutate			Total
						kg/buc.	kg/m		
P1	Tube rec. 100x100*5	S235 J2	SR EN 10219-2-2006	1	2950	-	14.70	43.37	
P2	Plate	S235 J2	SR EN 10029-2011	1	5 110 110	0.47	-	0.47	
P3	Tube $\Phi 26.9 \times 3.2$	S235 J2	SR EN 10060-2004	2	80	-	1.87	0.30	
P4	Plate	S235 J2	SR EN 10029-2011	2	10 60 70	0.33	-	0.66	
P5	Round $\Phi 12$	S235 J2	SR EN 10060-2004	8	500	-	0.89	3.55	
Total (kg) - inclusiv 3% pentru un ansamblu									50
Total (kg) - pentru 1 ansamblu									50

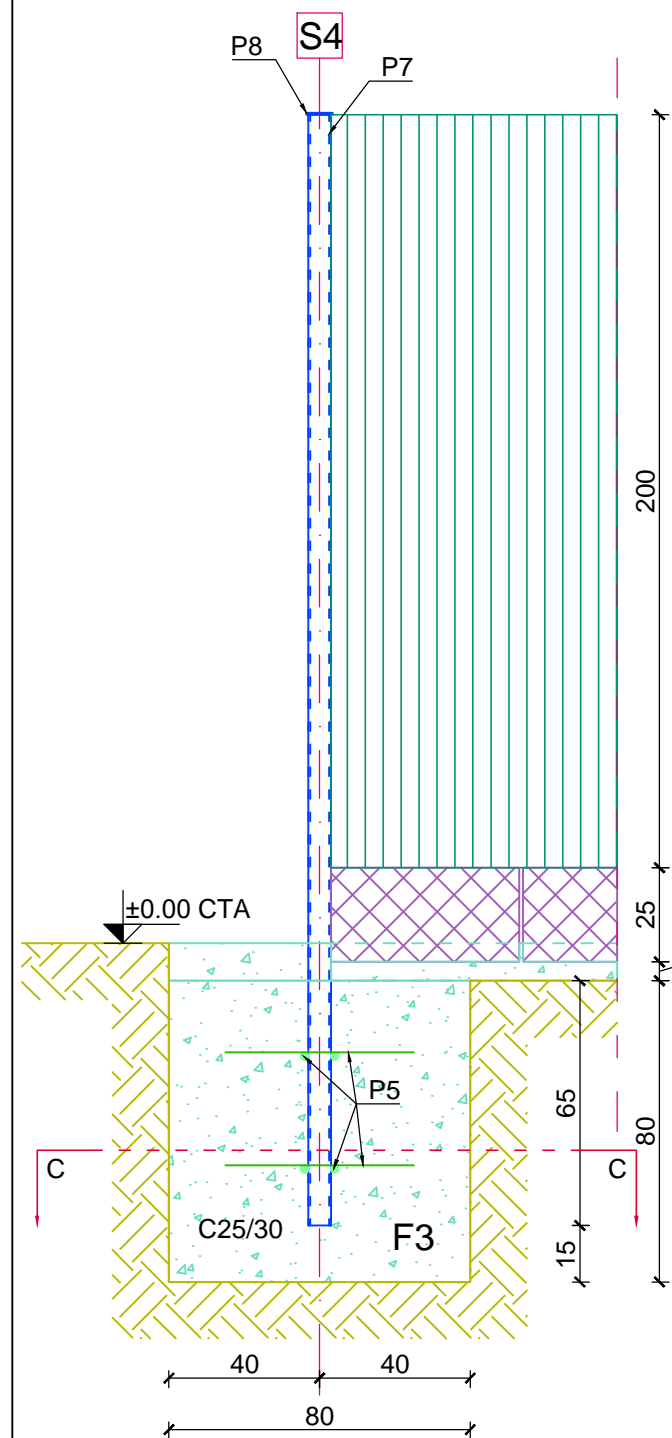
Extras de materiale S2									
Poz.	Nume	Material	Norma Produs	Buc.	Dimensiune (mm)	Greutate			Total
						kg/buc.	kg/m		
P1	Tube rec. 100x100*5	S235 J2	SR EN 10219-2-2006	1	2950	-	14.70	43.37	
P2	Plate	S235 J2	SR EN 10029-2011	1	5 110 110	0.47	-	0.47	
P3	Tube $\Phi 26.9 \times 3.2$	S235 J2	SR EN 10060-2004	2	80	-	1.89	0.30	
P4	Plate	S235 J2	SR EN 10029-2011	2	10 60 70	0.33	-	0.66	
P5	Round $\Phi 12$	S235 J2	SR EN 10060-2004	8	500	-	0.89	3.55	
P14	L 50x50x4	S235 J2	SR EN 10060-2004	1	1940	-	3.06	5.94	
Total (kg) - inclusiv 3% pentru un ansamblu									56
Total (kg) - pentru 1 ans.									56



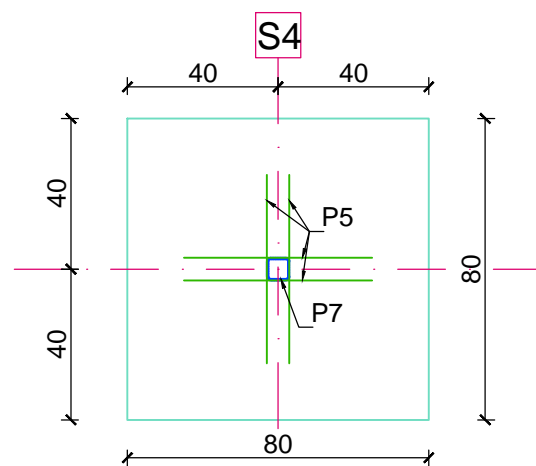
Extras de materiale S3									
Poz.	Nume	Material	Norma Produs	Buc.	Dimensiune (mm)	Greutate			Total
						kg/buc.	kg/m		
P1	Tube rec. 100x100*5	S235 J2	SR EN 10219-2-2006	1	2950	-	14.70	43.37	
P2	Plate	S235 J2	SR EN 10029-2011	1	5 110 110	0.47	-	0.47	
P3	Tube $\Phi 26.9 \times 3.2$	S235 J2	SR EN 10060-2004	2	80	-	1.87	0.30	
P4	Plate	S235 J2	SR EN 10029-2011	2	10 60 70	0.33	-	0.66	
P5	Round $\Phi 12$	S235 J2	SR EN 10060-2004	8	500	-	0.89	3.55	
Total (kg) - inclusiv 3% pentru un ansamblu									50
Total (kg) - pentru x ansamblu									50

02	Emis pentru Construire	03.2020	Ing.R. Brutaru	Ing.M.Voicu
01	Emis pentru Construire	03.2019	Ing.R. Brutaru	Ing.M.Scurtu
00	Prima revizie	09.2018	Ing.R. Brutaru	Ing.M. Scurtu
Rev.	Denumirea modificarii	Data	Intocmit	Verificat
Beneficiar:		CONPET S.A.		Specialitate Doc.:
Instalatie:		STATIE DE POMPARE OCHURI		Format
Scara:		Denumire desen		Faza
1 : 20		Plan Imprejurire si Porti Acces - Pag.2/4		PT+DE

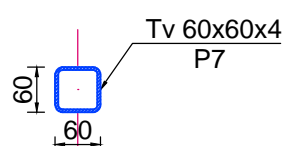
Scara 1:20



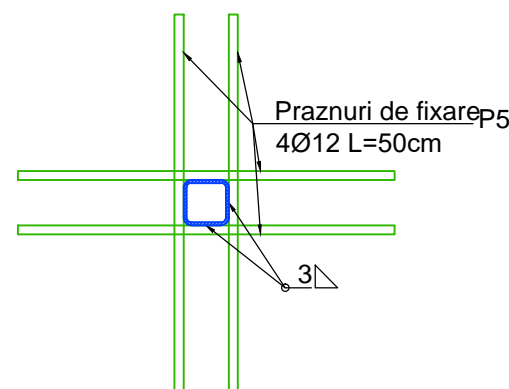
Scara 1:20



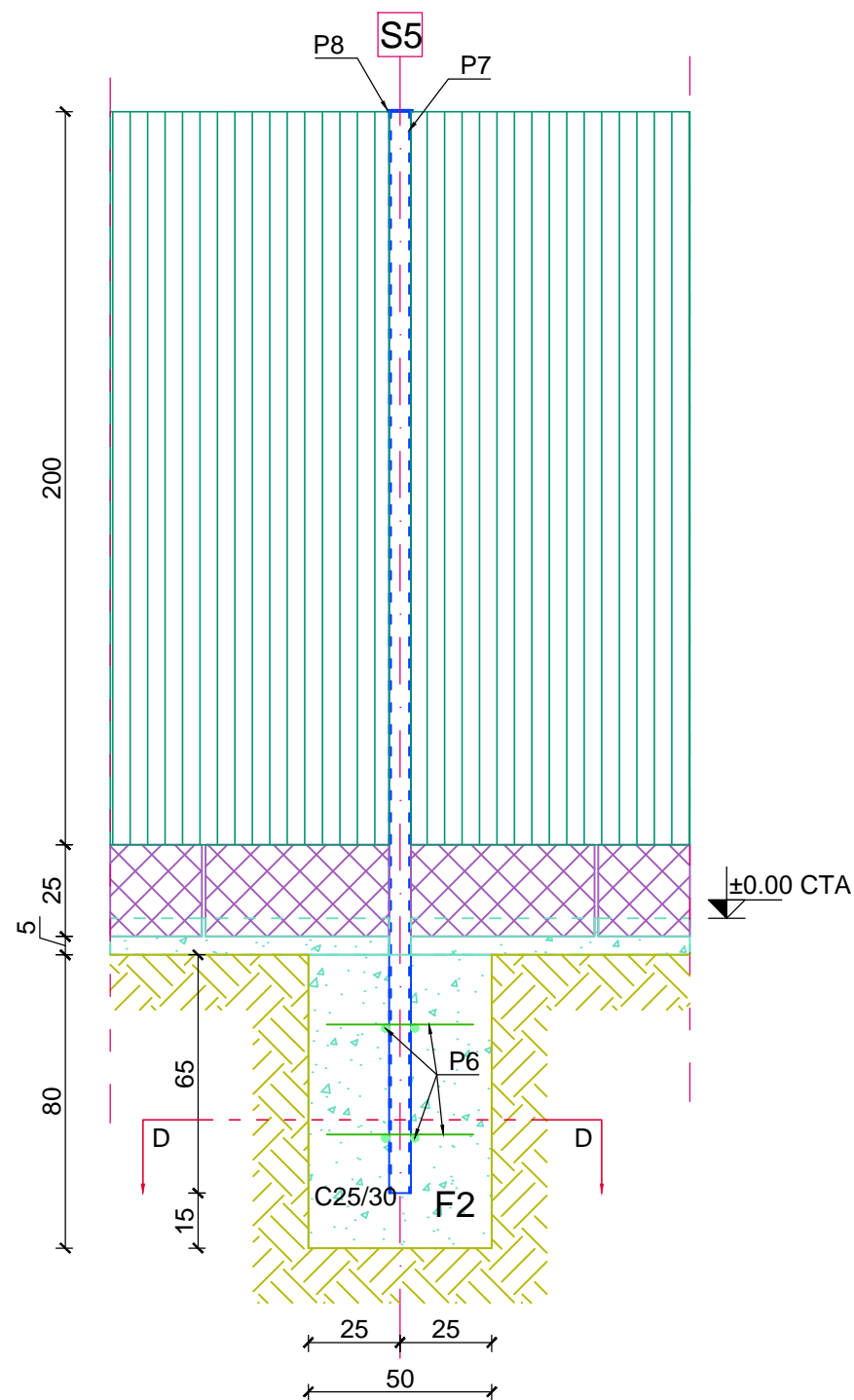
Scara 1:10



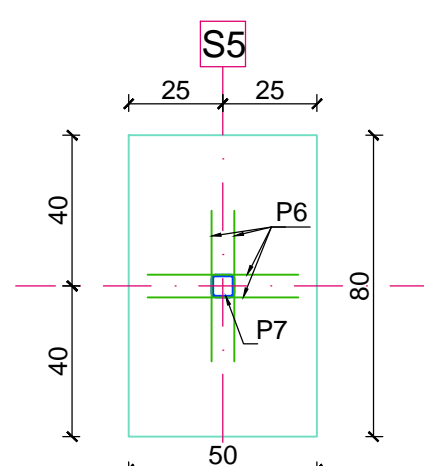
Scara 1:10



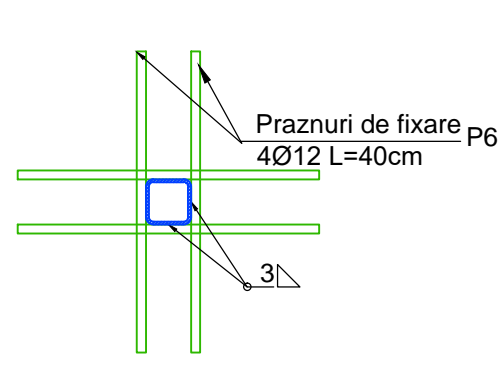
Scara 1:20



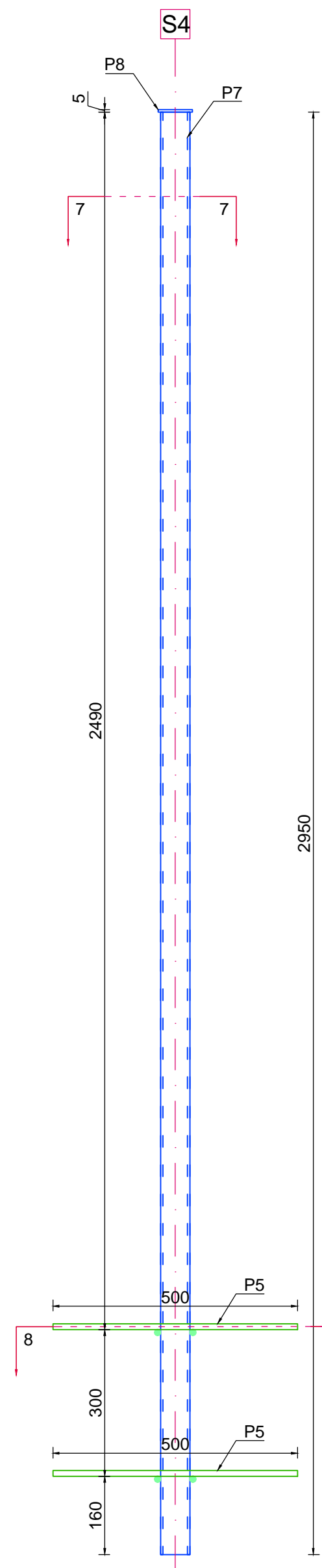
Scara 1:20



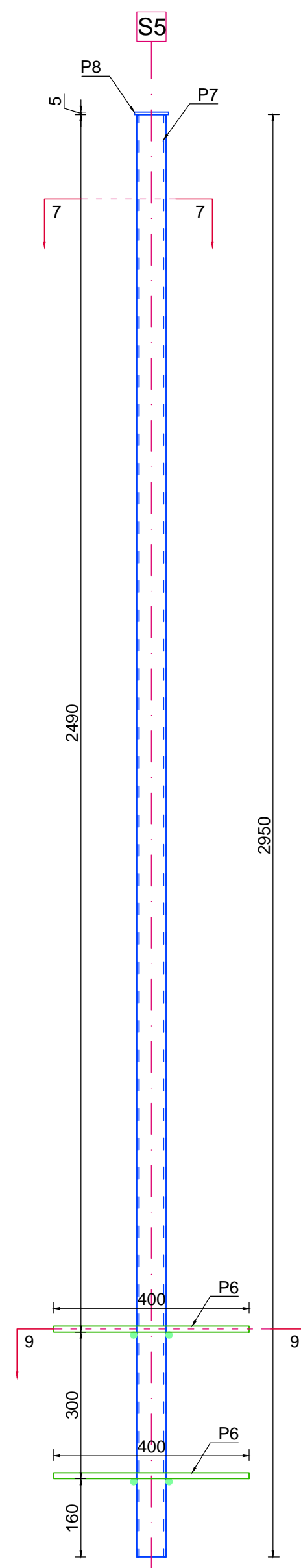
Scara 1:10



Scara 1:10



Scara 1:10



- BETON ARMAT - C25/30 - XC4+XF1; CI 0.20; CEM II A-S 32.5 N sau R; S3; GRANULATIE AGREGATE - Dmax. 16mm
- BETON SIMPLU - C12/15 - X0; CI 1.0; CEM II A-S 32.5 N sau R; S1-S3; GRANULATIE AGREGATE - Dmax. 22mm
- ARMATURA - OB37; PC52 - SR 438-1:2012; STNB - SR 438-3:2012;
- CONFECTII METALICE: S 235 J2

- CATEGORIA DE IMPORTANTA "C" CONF. HG 766/1997;
- CLASA DE IMPORTANTA "III" CONF. P100-1/2013;
- CONSTRUCTIA ESTE AMPLASATA IN ZONA SEISMICA CU ACCELERATIA TERENULUI PENTRU PROIECTARE $a_g = 0,35$ SI PERIOADA DE CONTROL(DE COLT) $T_c = 1,0$ s - conform P100 - 1/2013;
- DOMENIUL DE VERIFICARE A1;
- DIAMETRE ARMATURI : IN mm;
- COTE DESEN : IN cm;
- TOATE ELEMENTELE METALICE SE INCADREAZA IN CATEGORIA "B" DE EXECUTIE (CONF. STAS 767/0-88);
- CLASA DE ACCEPTABILITATE A SUDURILOR ESTE "C" (CONF. C150-99 TABEL 5);
- SUDURILE DE COLT NESPECIFICATE IN DESEN VOR AVEA GROSIMEA 0.7 DIN CEL MAI SUBTIRE ELEMENT IMBINAT IAR LUNGIMEA SUDURII VA FI PE TOATA SUPRAFATA DE CONTACT;
- PROTECTIA ANTICOROZIVA : GRUNDUITA (NUMARUL TOTAL DE STRATURI 2 , AVAND GROSIMEA TOTALA 80µm) SI VOPSITA (NUMARUL DE STRATURI 3-5, AVAND GROSIMEA TOTALA 200µm).
- CLASA DE COROZIVITATE : "C3" CONFORM CU GP 121/2013;
- GRADUL DE PREGATIRE A SUPRAFETELOR : "Sa2.5" , "PSa2.5" CONFORM TABEL 4.2 DIN GP 121/2013.
- SISTEM DE ACOPERIRE CU DURABILITATE MARE (H) > 15 ANI CONFORM SR EN ISO 12944-1;
- GROSIMEA MORTARULUI DE SUBTURNARE POATE VARIA DE LA 0-50 MM IN FUNCTIE DE GRADUL DE ORIZONTALITATE AL COTEI SUPERIOARE A BETONULUI.

- SE RECOMANDA CA EXCAVATIILE GROSIERE SA SE EXECUTE IN RITM ALERT, PE CAT POSIBIL INTR-O PERIOADA LIPSITA DE PRECIPITATII, IAR LUCRARILE SA FIE SUPRAVEGHEATE DE GEOTEHNICIAN;
- ULTIMUL STRAT DE PE FUNDUL SAPATURII (CIRCA 20 CM) VA FI INDEPARTAT INAINTE DE TURNAREA STRATULUI DE EGALIZARE DIN BETON SIMPLU.



- ± 0.00 CTA = COTA TERENULUI AMENAJAT

Extras de materiale S4										
Poz.	Nume	Material	Norma Produs	Buc.	Dimensiune (mm)		Greutate			
							kg/buc.	kg/m	Total	
P5	Round Φ12	S235 J2	SR EN 10060-2004	8	500		-	0.89	3.55	
P7	Tube rec. 60x60*5	S235 J2	SR EN 10219-2-2006	1	2950		-	6.90	20.36	
P8	Plate	S235 J2	SR EN 10029-2011	1	5	70	70	0.19	-	0.19
Total (kg) - inclusiv 3% pentru 1 bucata									25	
Total (kg) - pentru 6 bucati									149	

2

Extras de materiale S5									
Poz.	Nume	Material	Norma Produs	Buc.	Dimensiune (mm)		Greutate		
							kg/buc.	kg/m	Total
P6	Round Φ12	S235 J2	SR EN 10060-2004	8	400		-	0.89	2.84
P7	Tube rec. 60x60*5	S235 J2	SR EN 10219-2-2006	1	2950		-	6.90	20.36
P8	Plate	S235 J2	SR EN 10029-2011	1	5	70	70	0.19	0.19
Total (kg) - inclusiv 3% pentru 1 bucata									24
Total (kg) - pentru 37 bucati									891

2/

02	Emis pentru Construire	03.2020	Ing.R. Brutaru	Ing.M. Voicu		
01	Emis pentru Construire	03.2019	Ing.R. Brutaru	Ing.M. Scurtu		
00	Prima revizie	09.2018	Ing.R. Brutaru	Ing.M. Scurtu		
Rev.	Denumirea modificarii	Data	Intocmit	Verificat		
 <div>RIA ENGINEERING & CONSULTING 107065 BERTEA, SAT BERTEA, 012 100015, PLOIESTI, IL CARAGIALE 49 TELEFON: +40 244 471 659 email: office@riaengineering.ro</div>		 <div>CONPET S.A. Str. Anul 1848, nr. 1-3, 100559, PLOIESTI,</div>		<div>Nr. proiect:</div> <div>B.031.007</div>	<div>Desen - Nr.:</div> <div>CS-PLN-114</div>	<div>Rev.</div> <div>02</div>
Beneficiar:		CONPET S.A.		Specialitate Doc.:	Format	
Instalatie:		STATIE DE POMPARE OCHIURI		CIVIL	A2-o	
Scara:		Denumire desen				Faza
1 : 20		Plan Imprejurire si Porti Acces - Pag.3/4				PT+DE

